

# MONTHLY MEMBERSHIP PROGRESS REPORT

District A 1

Results as of: 5/31/2026

GMT:

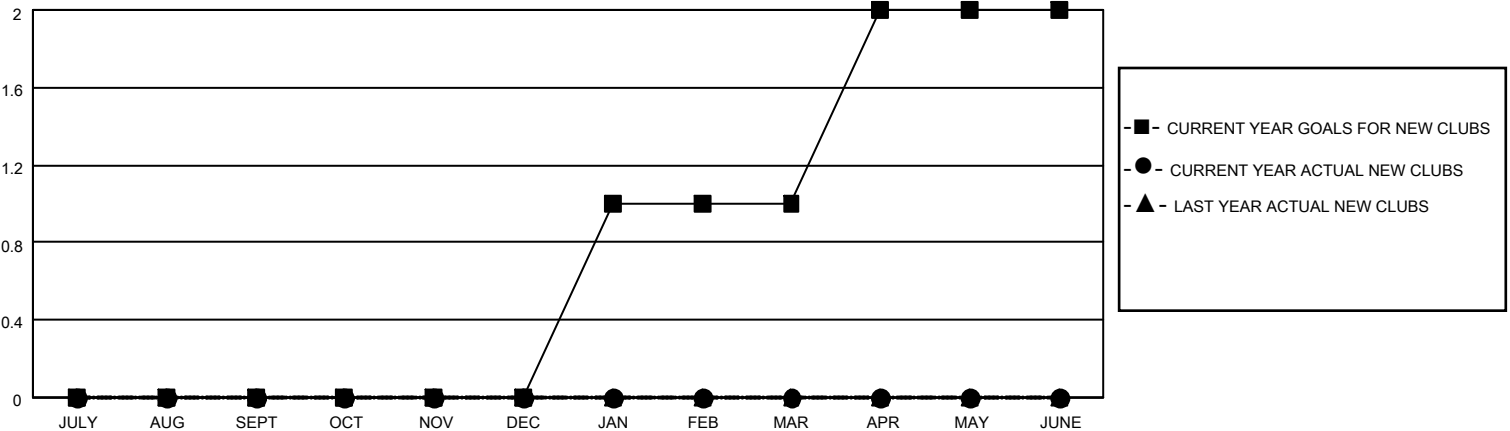
LOCATION ONTARIO

GMT CA

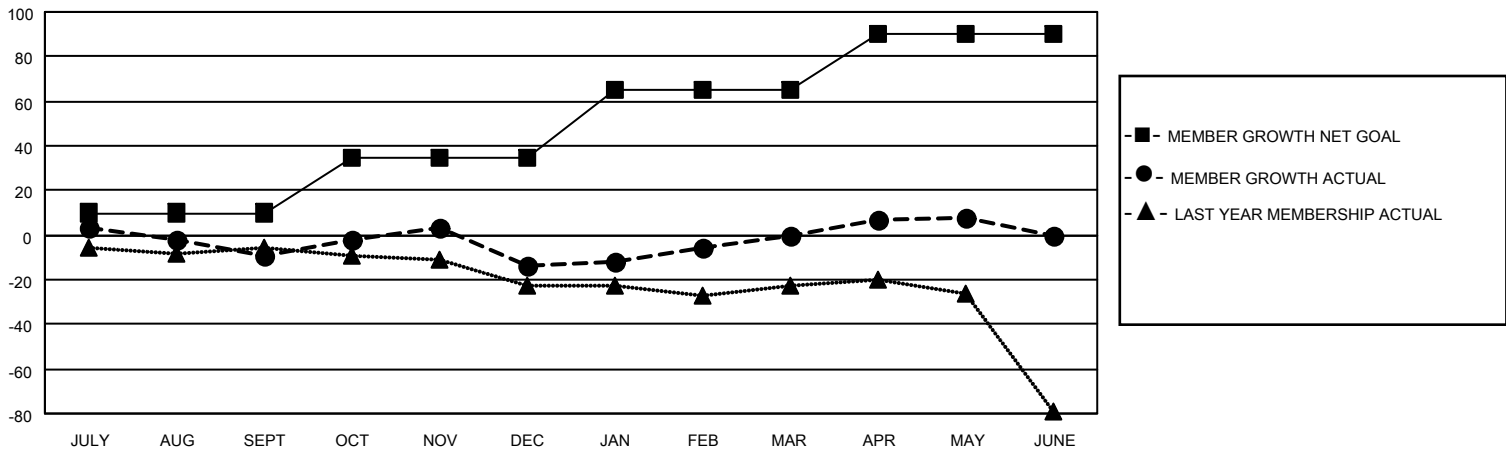
Clubs			
RESULTS FOR 2025-2026			
QUARTER	NEW CLUB GOAL	NEW CLUBS	DROPPED CLUBS
JULY/AUG/SEPT	0	0	0
OCT/NOV/DEC	0	0	0
JAN/FEB/MAR	1	0	0
APR/MAY/JUNE	1	0	0

Members			
RESULTS FOR 2025-2026			
QUARTER	MEMBER GROWTH NET GOAL	MEMBER GROWTH ACTUAL	DROPPED MEMBERS ACTUAL (including transfers)
JULY/AUG/SEPT	10	16	19
OCT/NOV/DEC	25	36	35
JAN/FEB/MAR	30	39	19
APR/MAY/JUNE	25	17	8

GOALS AND ACTUAL NEW CLUBS CUMULATIVE



GOALS AND ACTUAL MEMBERS CUMULATIVE



DROPPED CLUBS: 0	24 CLUBS OF 37 ADDED 1 OR MORE NEW MEMBERS	<b>GENDER DISTRIBUTION</b>
		MALE 793 (72.49%)
		FEMALE 299 (27.33%)
<b>DROPPED MEMBERS</b>	<a href="#">CLICK HERE FOR CUMULATIVE MEMBERSHIP DATA</a>	TOTAL FAMILY UNIT MEMBERS 177
DECEASED 18		FAMILY MEMBERS PAYING HALF DUES 90
CLUB CANCELLED 0		
OTHER 63		
<b>TOTAL 81</b>		